

The Novara is a great home for a family who frequently has guests or family members stay for extended periods.

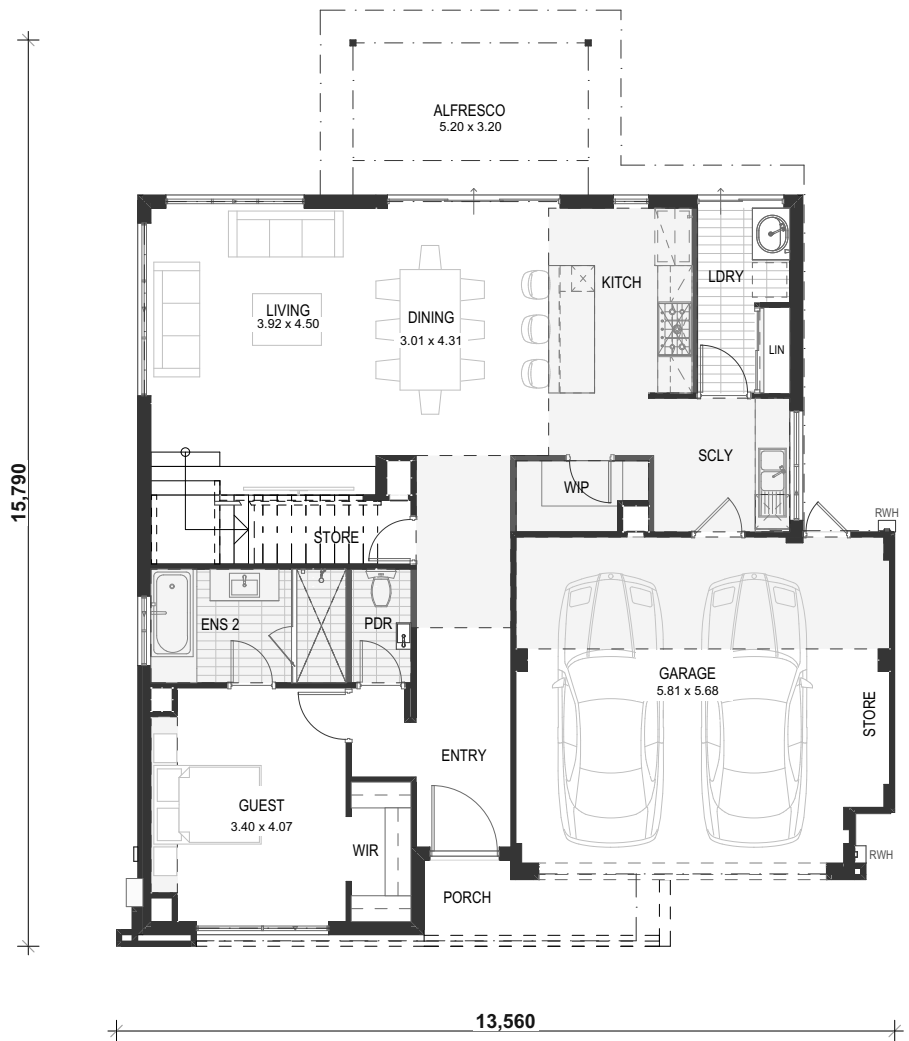
THIS DESIGN

Moving to the back of the home, the focus becomes on spending time together. The kitchen island creates the perfect place to gather, creating a convergence point as people enter the home.

For total functionality, a scullery creates a simple way to conceal mess out of sight from guests, with simple access from the shoppers entrance creating a temporary drop zone.

AREAS


Ground Floor Living	113.01m ²
Garage	38.82m ²
Alfresco	16.66m ²
Porch	2.27m ²
Ground Floor Total	170.76m ²



GROUND FLOOR

 dominationhomes.com.au

 enquiries@dominationhomes.com.au

 (08) 9262 7400

 4  3  2

Copyright Carrisa Pty Ltd atf The Minniti Family Trust T/A Domination Homes
Reproduction of this plan is illegal without the written permission of Carrisa Pty Ltd

* Please note, these images are for illustration purposes only



The Novara is a great home for a family who frequently has guests or family members stay for extended periods.

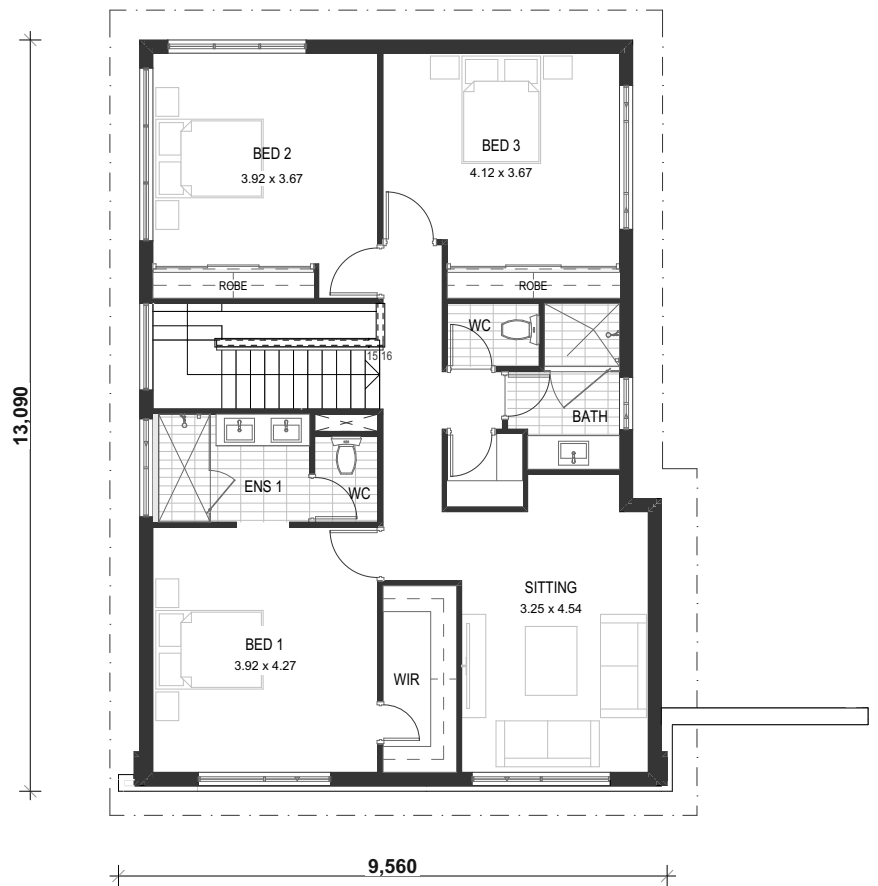
THIS DESIGN

Upstairs, residents each have large bedrooms, anchored by a sitting room for the residents to unwind in after a busy day. For the parents, the bedroom is spacious, with a large walk-in robe and ensuite ensuring a restful evening after busy days working.

For the kids, their bedrooms offer plenty of space for them to be themselves, with large built-in wardrobes helping to contain any mess.

AREAS


Upper Floor Living	114.20m ²
Upper Floor Total	114.20m ²
TOTAL AREA	284.96m²



UPPER FLOOR

 dominationhomes.com.au

 enquiries@dominationhomes.com.au

 (08) 9262 7400

 4  3  2

Copyright Carrisa Pty Ltd atf The Minniti Family Trust T/A Domination Homes
Reproduction of this plan is illegal without the written permission of Carrisa Pty Ltd

* Please note, these images are for illustration purposes only



The Novara is a great home for a family who frequently has guests or family members stay for extended periods.

RAISING THE STANDARD OF LUXURY RESIDENTIAL LIVING

Domination Homes stands at the forefront of redefining luxury residential living standards, embodying a commitment to unparalleled opulence and sophistication. Our homes integrate cutting-edge design, timeless elegance together with meticulous quality craftsmanship and premium materials to create a home built to last a lifetime.



PERTH'S STRONGEST BUILDING MATERIALS

Concrete and double brick construction is a staple in the Perth construction industry. This construction method is known for its reliability against Perth's diverse climate.



A KITCHEN UNIQUE TO YOU

With a custom cabinetry plan and high-end 900mm European appliances, design the kitchen of your dreams that is built to withstand the largest of family gatherings.



MATERIALS FROM PERTH'S INDUSTRY LEADERS

Utilising only the most reliable, local suppliers, Domination Homes has established relationships with industry leaders such as Jason Windows, Midland Brick and Dulux.



PREMIUM RECTIFIED & MITERED TILING

At Domination Homes, we mitre the edges of our rectified tiles. Mitring describes the process of angling corner tiles so they have a seamless finish.



MAKING A STATEMENT WITH TALLER CEILINGS

As part of our luxury standard inclusions, we have included 31 course ceilings to the ground and upper floors of your next home, creating a grand feeling to all rooms.

PERTH CONSTRUCTION PIONEERS, ESTABLISHED IN 1980

Our passion is for perfection. With a rich legacy spanning back multiple generations, we are leaders in luxury residential design and construction in Perth. Discover why our clients love their custom homes, built by a Perth construction pioneer.



YEARS OF CRITICALLY ACCLAIMED HOMES IN WA

Spanning across multiple years, Domination Homes is an acclaimed builder by the Master Builder's Association and Housing Industry Association.



FAMILY OPERATED AND OWNED WA BUSINESS

Domination Homes is operated by three generations of builders, who are passionate about providing affordable luxury homes.



A STRONG HISTORY, BACKED BY A FINANCIAL FOUNDATION THAT SECURES YOUR NEW HOME

At Domination Homes, we're proud of our 40 years of prosperous service. By building with us, you're choosing a company with a strong financial standing ensuring your home gets built to an excellent standard. We value our ability to support our clients through their building journey and to give them the assurance that our company and its financial stability will ensure the quality construction of your home.