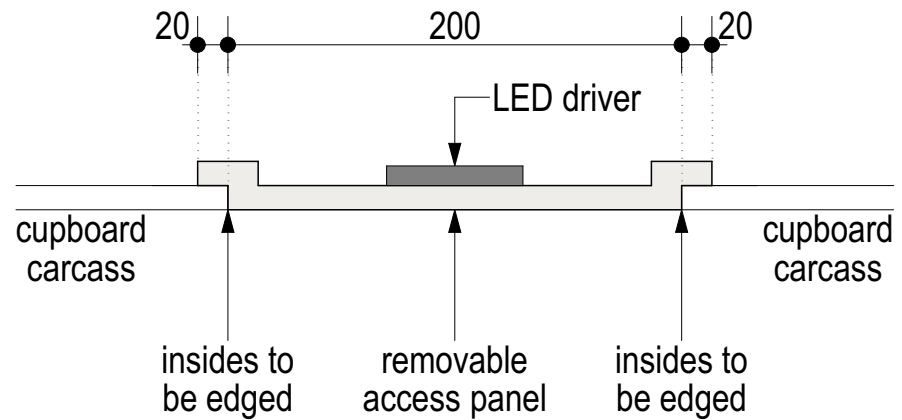
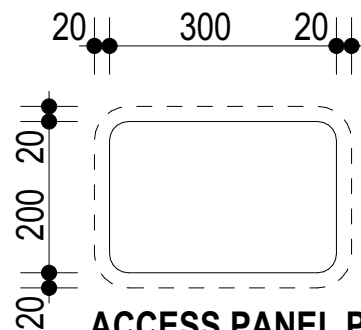


LED DOWNLIGHT IN OVERHEAD CUPBOARDS
scale 1:20



ACCESS PANEL DETAIL TO OVERHEAD CUPBOARDS

NTS



25mm rounded edges to 200mm x 300mm access panel (adjust size for cupboard if required & keep away from glazed cupboards)

ACCESS PANEL PLAN VIEW

NTS

NOTE: LED drivers to be at 1.0m ctrs for downlights **OR** 1x driver at one end for LED strip lights with all cables in one location by cabinetmaker for connection by electrical contractor.

© Copyright Domination Homes.
Reproduction of this plan is illegal
without the written permission of
DOMINATION HOMES.

Suite 1/43 Westchester Rd
MALAGA WA 6090
Ph: 92627400 Fax: 92484466

LED Downlight in O/Head Cupb'ds

Drawn: J.Romeo	Date: 20-Nov-17
Scale: As noted	Sheet 01 of 01

Size:
A4

