

Sleek, elegant and visionary, The Sardinia is your perfect private oasis.

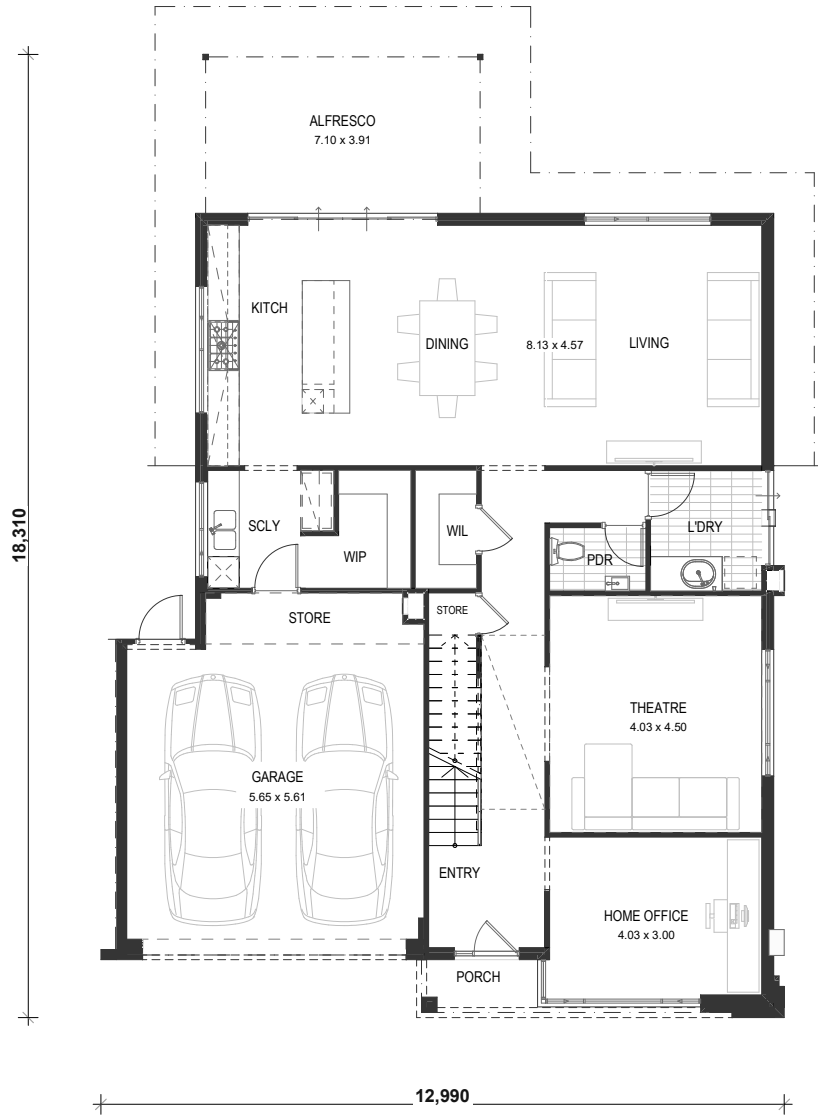
## THIS DESIGN

From every angle, The Sardinia exemplifies lifestyle living at its finest

The ground floor of the home boasts multiple luxury amenities, including a functional home office conveniently located by the entrance of the home. It also includes a large theatre room, perfect for sharing a movie with the family or unwinding with your favourite show after a long day at work..

## AREAS


Ground Floor Living	129.74m <sup>2</sup>
Garage	35.23m <sup>2</sup>
Store	4.21m <sup>2</sup>
Alfresco	27.76m <sup>2</sup>
Porch	2.53m <sup>2</sup>
Ground Floor Total	199.47m <sup>2</sup>



GROUND FLOOR

 [dominationhomes.com.au](http://dominationhomes.com.au)

 [enquiries@dominationhomes.com.au](mailto:enquiries@dominationhomes.com.au)

 (08) 9262 7400

 4  2.5  2



Sleek, elegant and visionary, The Sardinia is your perfect private oasis.

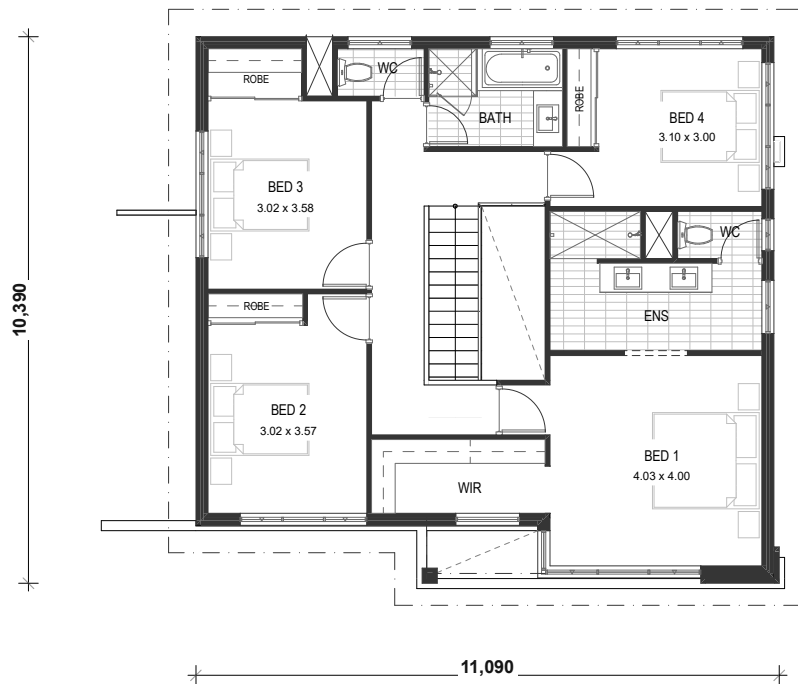
## THIS DESIGN

Nothing is by chance in this stunning home with fine finishes that echo luxury boutique hotels. A master bedroom with retreat and another with lavish make-up vanity ensure you get the five-star treatment.

Don't forget your first floor sitting area and activity spaces. The Sardinia is bursting with possibilities - an idyllic gem to invigorate mind, body and soul.

## AREAS

Upper Floor Living	106.80m <sup>2</sup>
Upper Floor Total	106.80m <sup>2</sup>
<b>TOTAL AREA</b>	<b>306.27m<sup>2</sup></b>



UPPER FLOOR

dominationhomes.com.au

enquiries@dominationhomes.com.au

(08) 9262 7400

4 2.5 2

Copyright Carrisa Pty Ltd at The Minniti Family Trust T/A Domination Homes  
Reproduction of this plan is illegal without the written permission of Carrisa Pty Ltd

\* Please note, these images are for illustration purposes only



Sleek, elegant and visionary, The Sardinia is your perfect private oasis.

## RAISING THE STANDARD OF LUXURY RESIDENTIAL LIVING

Domination Homes stands at the forefront of redefining luxury residential living standards, embodying a commitment to unparalleled opulence and sophistication. Our homes integrate cutting-edge design, timeless elegance together with meticulous quality craftsmanship and premium materials to create a home built to last a lifetime.

### PERTH'S STRONGEST BUILDING MATERIALS

Concrete and double brick construction is a staple in the Perth construction industry. This construction method is known for its reliability against Perth's diverse climate.

### A KITCHEN UNIQUE TO YOU

With a custom cabinetry plan and high-end 900mm European appliances, design the kitchen of your dreams that is built to withstand the largest of family gatherings.

### MATERIALS FROM PERTH'S INDUSTRY LEADERS

Utilising only the most reliable, local suppliers, Domination Homes has established relationships with industry leaders such as Jason Windows, Midland Brick and Dulux.

### PREMIUM RECTIFIED & MITERED TILING

At Domination Homes, we mitre the edges of our rectified tiles. Mitring describes the process of angling corner tiles so they have a seamless finish.

### MAKING A STATEMENT WITH TALLER CEILINGS

As part of our luxury standard inclusions, we have included 31 course ceilings to the ground and upper floors of your next home, creating a grand feeling to all rooms.

## PERTH CONSTRUCTION PIONEERS, ESTABLISHED IN 1980

Our passion is for perfection. With a rich legacy spanning back multiple generations, we are leaders in luxury residential design and construction in Perth. Discover why our clients love their custom homes, built by a Perth construction pioneer.

### YEARS OF CRITICALLY ACCLAIMED HOMES IN WA

Spanning across multiple years, Domination Homes is an acclaimed builder by the Master Builder's Association and Housing Industry Association.

### FAMILY OPERATED AND OWNED WA BUSINESS

Domination Homes is operated by three generations of builders, who are passionate about providing affordable luxury homes.

### A STRONG HISTORY, BACKED BY A FINANCIAL FOUNDATION THAT SECURES YOUR NEW HOME

At Domination Homes, we're proud of our 40 years of prosperous service. By building with us, you're choosing a company with a strong financial standing ensuring your home gets built to an excellent standard. We value our ability to support our clients through their building journey and to give them the assurance that our company and its financial stability will ensure the quality construction of your home.